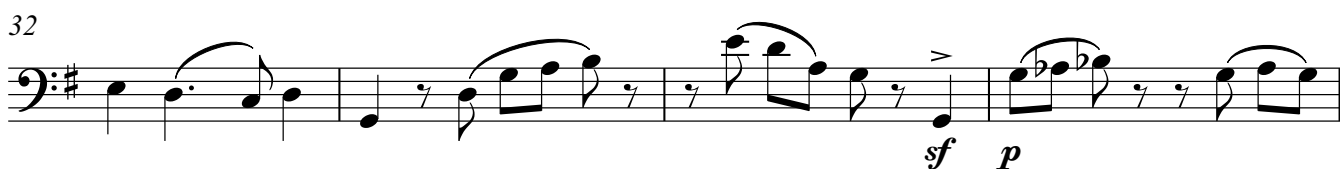
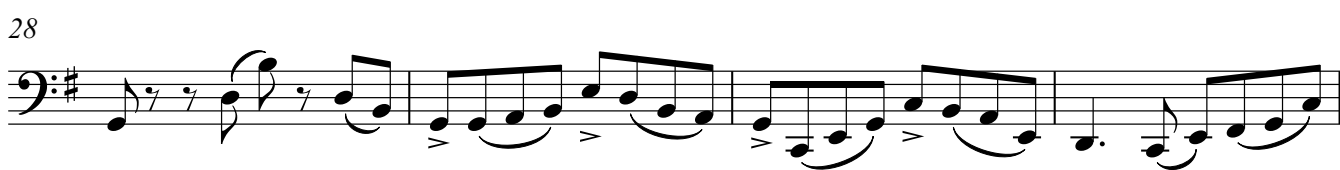
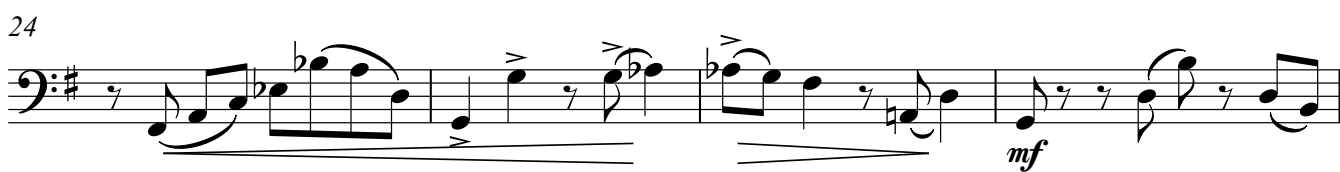
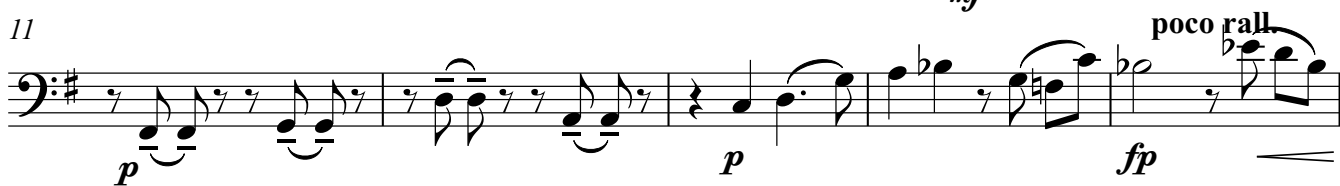
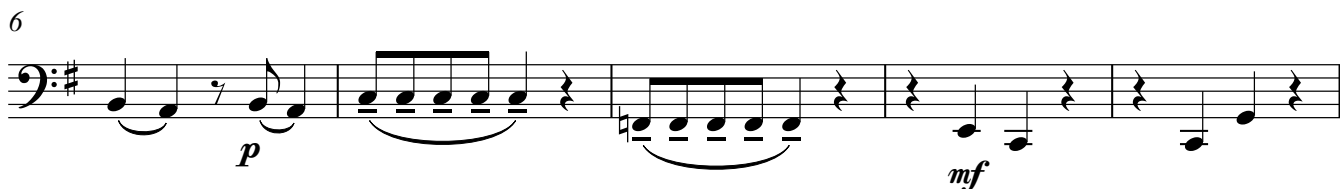


5. Streichquartett  
(2001)

Friedrich Radermacher

1. Adagio



44



48



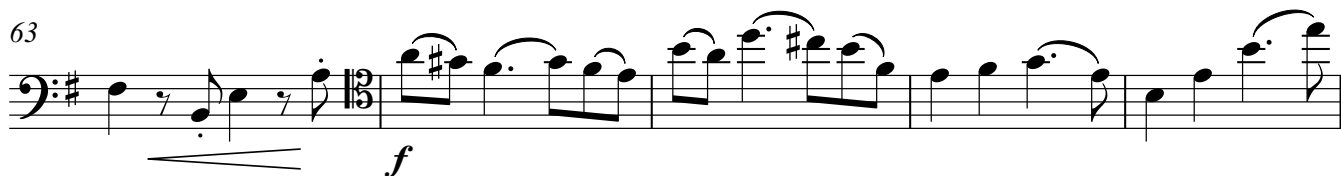
53



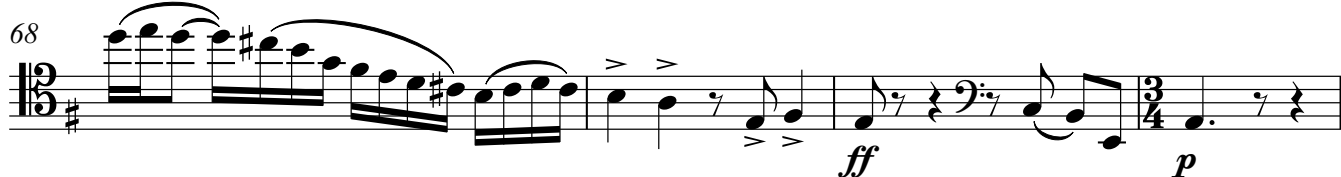
58



63



68



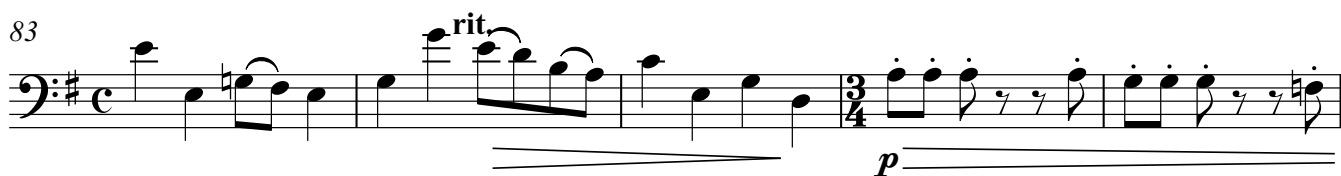
72



78



83



88

Andante espressivo



94



## Violoncello

## Violoncello

3

99 **Allegro con moto**

103



107



112



116



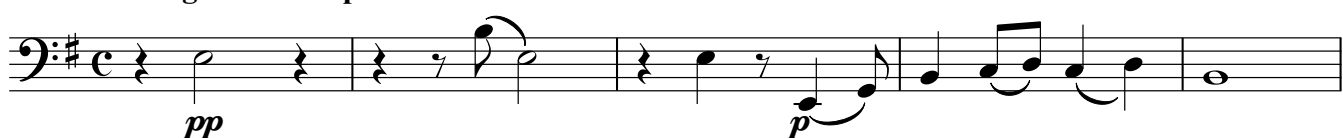
119



123



128

2. **Adagio molto espressivo**

139



145



150

154 **Pia Glosso**

159



164



167



170

**Tempo 1**

175



180



184



189



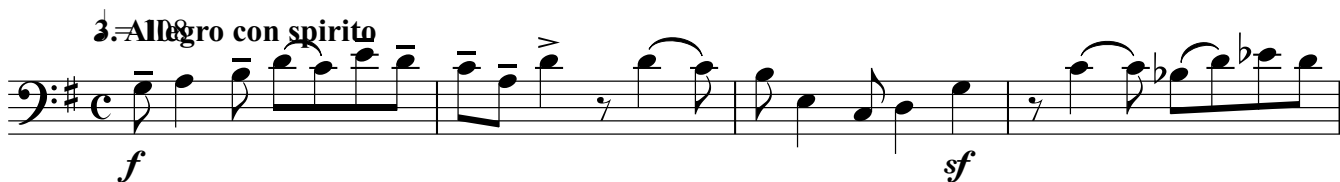
192



196



3. Allegro con spirito



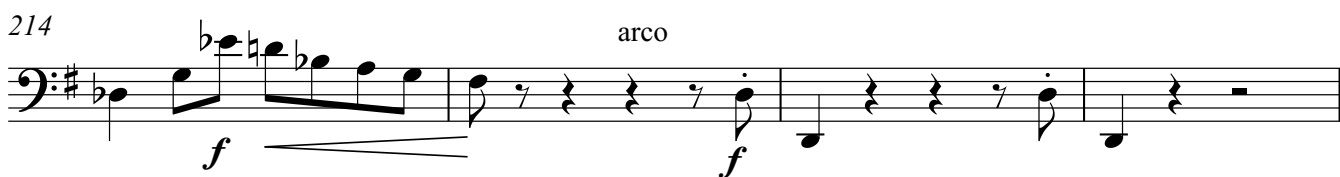
205



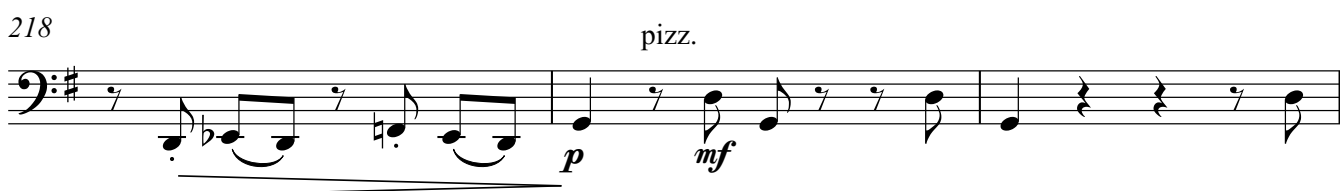
209



214



218



[illegible][illegible]

229

229

233

233

237

*p*

241

The musical score for the bass line of 'The Rose Tree' is written on a single staff with a key signature of one sharp (F#) and a common time signature (C). The melody begins with a series of eighth and sixteenth notes, including a triplet of eighth notes. It features several slurs and ties, indicating a continuous melodic line. The piece concludes with a final note marked with a forte dynamic (mf) and a 'pizz.' (pizzicato) instruction.

244

*f* *p*

248

Exercise 248 is a short piece in the bass clef, key of D major (one sharp). It consists of four measures. The first measure contains an eighth note D, an eighth rest, a quarter note E, an eighth rest, and an eighth note F. The second measure contains an eighth note G, an eighth rest, a quarter note A, an eighth rest, and an eighth note B. The third measure contains an eighth note C, an eighth rest, an eighth note D, an eighth rest, an eighth note E, an eighth rest, an eighth note F, and an eighth note G. The fourth measure contains an eighth note A, an eighth rest, an eighth note B, an eighth rest, an eighth note C, an eighth note D, an eighth note E, and an eighth note F.

252

256

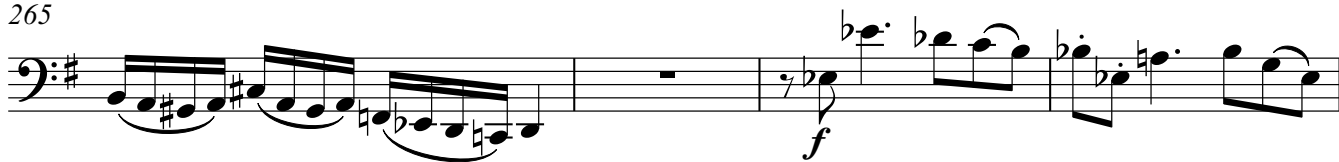
pizz.

260

arco

*f* *etwas frei*

265



269



272



278



283



287



292



296



300



304



308



## Violoncello

311

## Violoncello

arco

311

arco

*ff*

314

**rit.**

314

rit.

4.

*ff*

*sf*

## A#eegr2 giocoso

*p*

5

*mf*

 $f$ 

Musical notation for the bass line of 'The Rose Tree'. The key signature is one sharp (F#). The notation includes a mezzo-forte (*mf*) dynamic marking at the beginning and a forte (*f*) dynamic marking towards the end. The melody is written on a single staff with various note values and rests.

9

*pp*

*mf*

*pp*

Musical notation for the bass line of 'The Rose Tree'. The key signature is one sharp (F#). The melody consists of eighth and sixteenth notes, with some notes beamed together. The dynamics are marked as *pp* (pianissimo), *mf* (mezzo-forte), and *pp* (pianissimo).

12

$$mf$$
 $\mathcal{F}$ 

The bass line of 'The Rose Tree' is written on a single staff in bass clef with a key signature of one sharp (F#). The melody begins with a half note F#2, followed by a quarter rest, then a quarter note G#2, and a half note A2. This is followed by a double bar line. The second phrase starts with a half note B1, a quarter rest, and a half note C2. The final phrase consists of a half note D2, a quarter note E2, a quarter note F#2, and a half note G#2. The piece concludes with a final half note A2. The dynamic markings *mf* and *f* are placed below the staff at the beginning and middle of the piece, respectively.

15

 $pp$ 

*mf*

*pp*

15  Musical score for the bass line of 'The Rose Tree'. The key signature is one sharp (F#). The melody starts on a low note, moves up stepwise, and then has a series of eighth notes. It includes dynamic markings: *pp* (pianissimo), *mf* (mezzo-forte), and *pp* (pianissimo).

19

*mf*

 $f$ 

19

*mf* *f*

23

$p$

23

*p*

26

**rit.**

*pp*

26

rit. *pp*



30 Poco meno



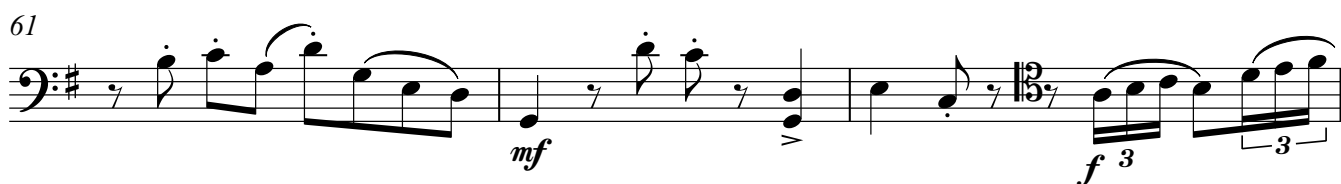
35 poco rall. . . . im Tempo



41 poco accel.



45 Tempo 1



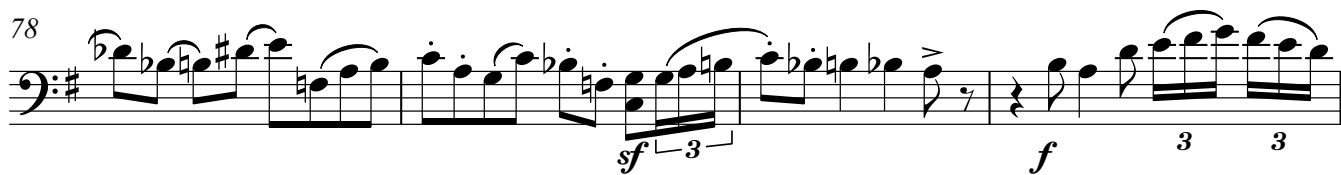
70 molto rit. . . . Tempo 1



74



78



82



85

